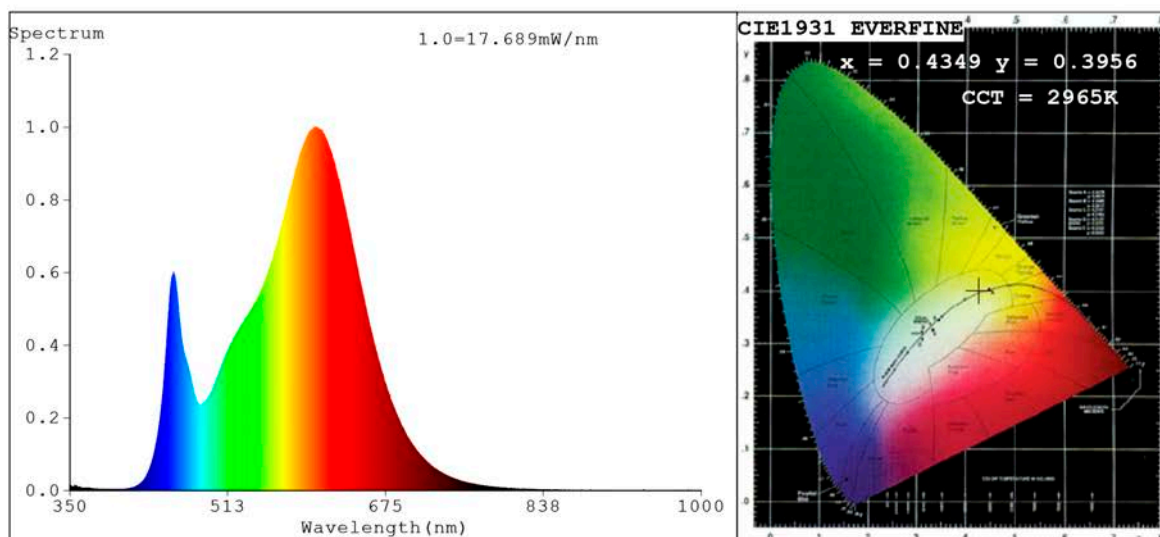


Spectrum Test Report



Color Parameters:

Chromaticity Coordinate: $x=0.4349$ $y=0.3956$ $u'=0.2529$ $v'=0.5177$
 CCT=2965K (Duv=-0.0031) Dominant WL:Ld =584.1nm Purity=49.3%
 Ratio:R=23.4% G=73.6% B=3.0%; Peak WL:Lp=601.8nm FWHM=117.4nm
 Render Index:Ra=82.4 CRI=77.7 TM30:Rf=81 Rg=95
 R1 =82 R2 =94 R3 =92 R4 =79 R5 =83 R6 =93 R7 =79
 R8 =57 R9 =7 R10=87 R11=78 R12=75 R13=86 R14=97 R15=75

Photo Parameters:

Flux = 836.7 lm Eff. : 90.05 lm/W Fe = 2.574 W Scotopic:1154.4 S/P:1.3797

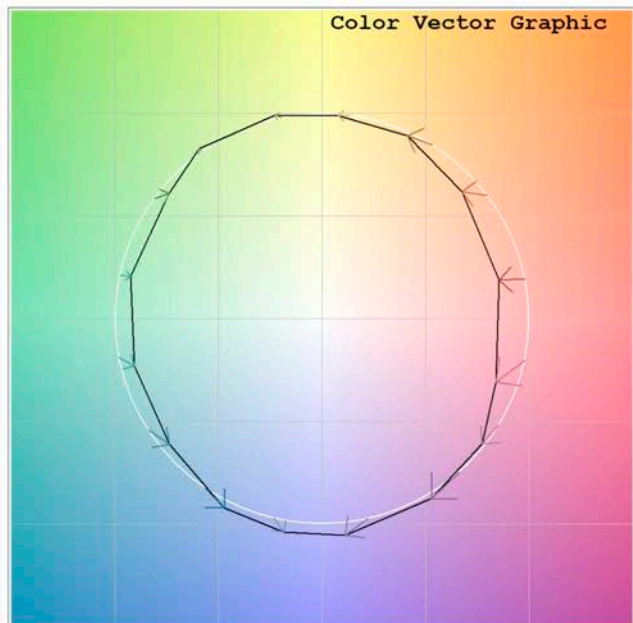
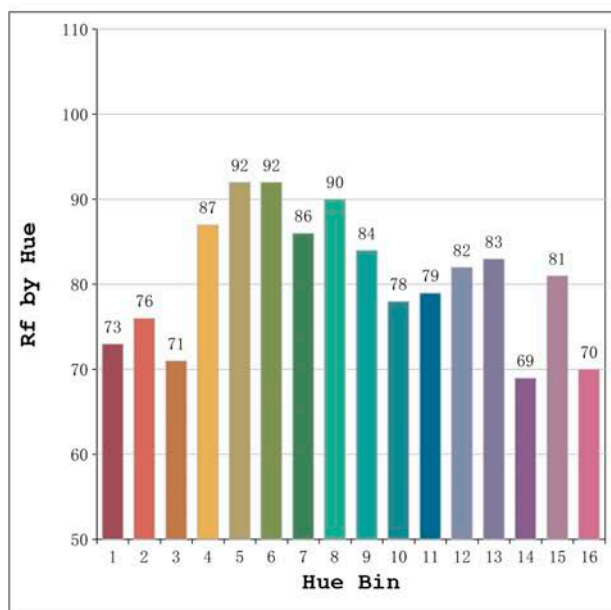
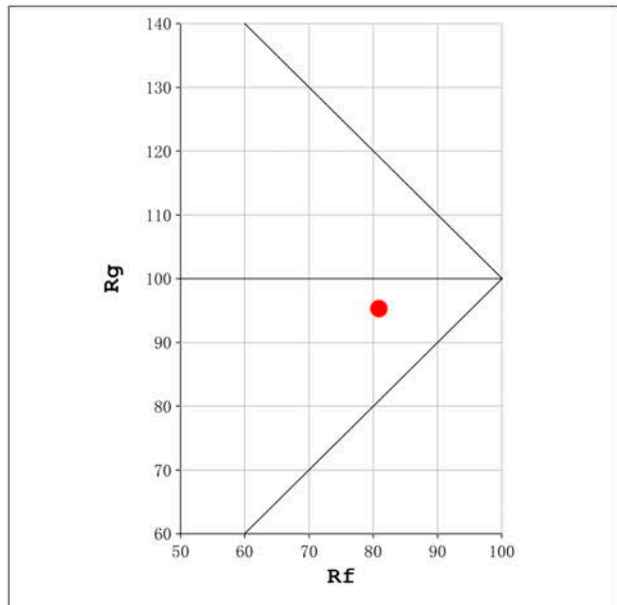
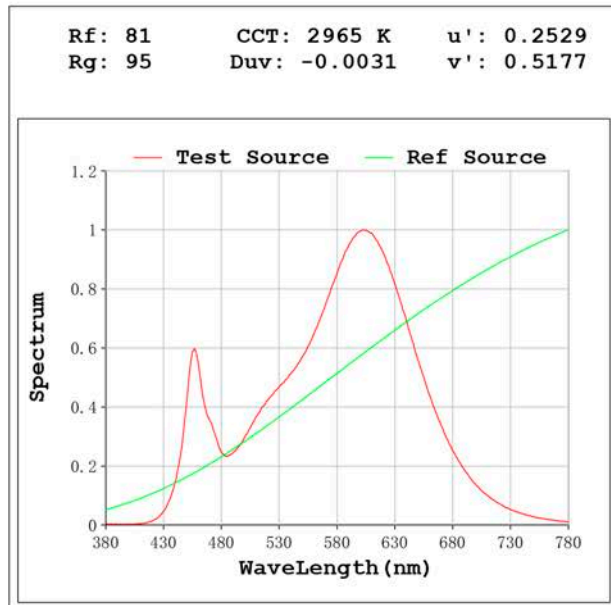
Electrical parameters:

V = 11.998 V I = 0.7744 A P = 9.291 W PF = 1.000

Status: Integral T = 1433 ms Ip = 49340 (75%)

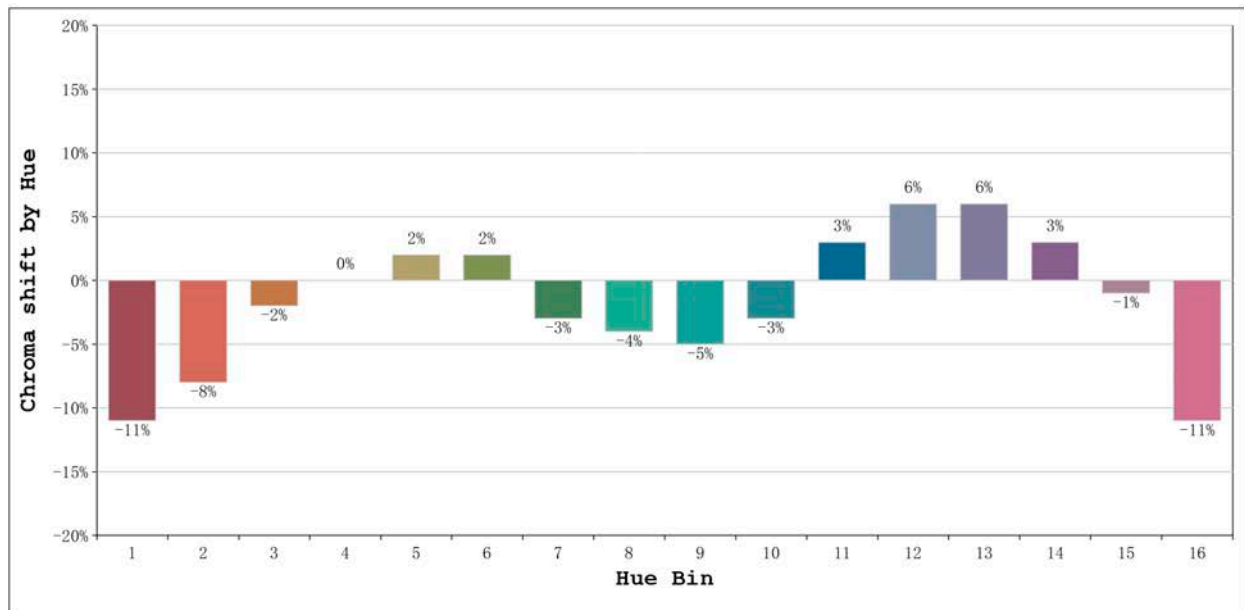
Model:Ecoled Getafe 2800k
 Tester:Sergio Carneros
 Temperature:20Deg
 Manufacturer:Luz Negra S.L

Number: 32.016
 Date:25-5-2021
 Humidity:57%
 Remarks:100cm de tira flexible



Model:Ecoled Getafe 2800k
 Tester:Sergio Carneros
 Temperature:20Deg
 Manufacturer:Luz Negra S.L

Number: 32.016
 Date:25-5-2021
 Humidity:57%
 Remarks:100cm de tira flexible



Hue Bin	Hue Angle	Rf	Graphic shift(%)	
			Chroma	Hue
1	0.0° - 22.5°	73	-11	2
2	22.5° - 45.0°	76	-8	8
3	45.0° - 67.5°	71	-2	13
4	67.5° - 90.0°	87	0	5
5	90.0° - 112.5°	92	2	3
6	112.5° - 135.0°	92	2	-1
7	135.0° - 157.5°	86	-3	-5
8	157.5° - 180.0°	90	-4	0
9	180.0° - 202.5°	84	-5	6
10	202.5° - 225.0°	78	-3	11
11	225.0° - 247.5°	79	3	13
12	247.5° - 270.0°	82	6	6
13	270.0° - 292.5°	83	6	-11
14	292.5° - 315.0°	69	3	-17
15	315.0° - 337.5°	81	-1	-11
16	337.5° - 360.0°	70	-11	-12

Model:Ecoled Getafe 2800k
 Tester:Sergio Carneros
 Temperature:20Deg
 Manufacturer:Luz Negra S.L

Number: 32.016
 Date:25-5-2021
 Humidity:57%
 Remarks:100cm de tira flexible